

Bridging with Snap Lock

A case study on the benefits of the new bridging bar by Flex-Ability Concepts



Pictured from left to right:
Jerry Smith, Amanda Pulley, Austin Reyna, Shawn Provençal

Many projects call for stud bridging to prevent buckling. Snap Lock bridging bars (16" or 24") are bars that "snap" together within the stud knockout to provide exceptional torsional stud restraint. After learning about the new bridging product by Flex-Ability Concepts, Baker Triangle was eager to test it out. Meetings with Amanda Pulley, a Flex-Ability Concept's product representative, identified a few projects that would be ideal for Snap Lock installations.

SNAP LOCK

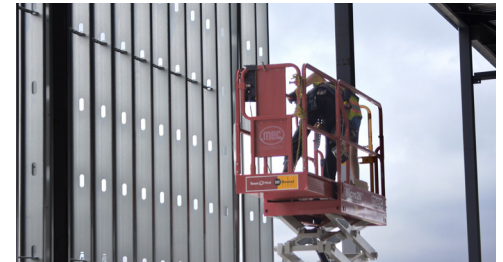
- ◆ Frame up to 700-800 lf/day.
- ◆ Easy to handle, especially on scissor lifts.
- ◆ Easy to store safely on the job site.

CRC & CLIPS

- ◆ Frame 200-225 lf/day.
- ◆ Awkward to install.
- ◆ Risk of damage and being stolen when stored on the job site.

BAKER TRIANGLE FINDINGS

- ◆ Ideal for larger projects that have 25 lf, high walls.
- ◆ Best to use on projects with minimal openings or interruptions. This minimizes the number of start/stop instances.
- ◆ Snap Lock can be installed by a single framer, whereas CRC & clips usually require two framers.
- ◆ A single framer could potentially install 700-800 lf/day on average, compared with 200-225 lf/day on average with CRC & clips.
- ◆ Even in rough conditions, a single framer could average 450 lf/day. (Rough conditions include: multiple openings, multiple start/stops, etc.)
- ◆ Snap Lock is easy to store safely on a job site, reducing the risk of being damaged or stolen.



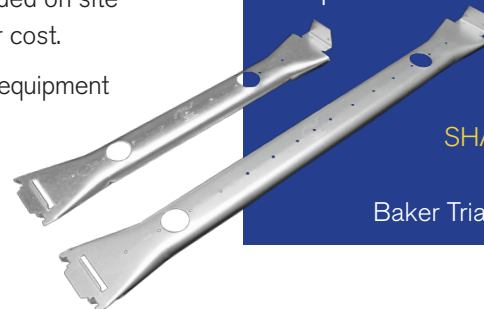
ALLEVIATED FRUSTRATION

- ◆ Easy to install - short learning curve leading to minimal on-the-job training.
- ◆ Easy to load several boxes on a scissor lift.
- ◆ No additional skills required.
- ◆ No handling of long CRC.
- ◆ No clips.
- ◆ No screws.

COST SAVINGS

- ◆ Fewer framers = reduced labor cost.
- ◆ Fewer framers = potentially fewer safety managers needed on site further reducing labor cost.
- ◆ Faster framing = less equipment rental time.

Snap Lock is faster than using CRC & clips, which most drawings show for bridging. I believe we will see a 50-75% savings on labor, which would translate into installing hundreds of feet in a day. Guys who have been with our company for 10-15 years really like working with Snap Lock.



SHAWN PROVENÇAL
Superintendent
Baker Triangle - Austin Texas